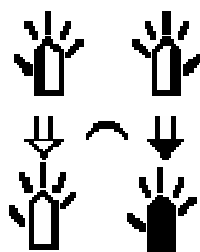
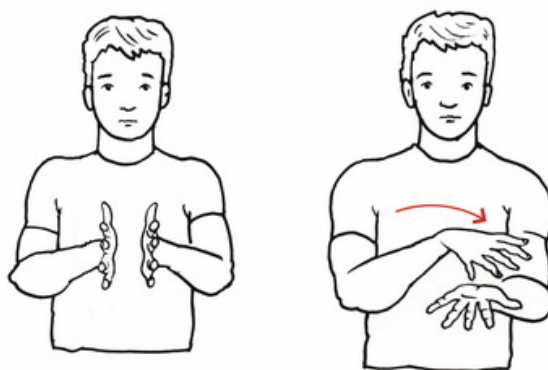


# CROSS BORDER OF SILENT II




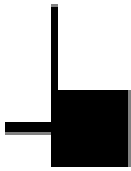
## EXERCISE CARDS



<http://unitis.pl/projekty-realizowane/cross-border-of-silent-ii.html>


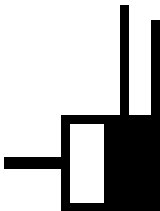


## KARTA ĆWICZEŃ NR 1

Ćwicz zapis układu ręki w notacji SW

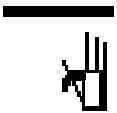

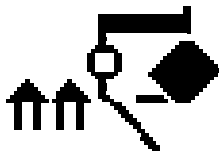
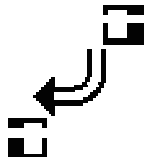
## KARTA ĆWICZEŃ NR 2

### Ćwicz zapis układu ręki w notacji SW





			

## KARTA ĆWICZEŃ NR 4

Zaznacz odpowiedni symbol kontaktu

Mój 	praca 
Imię 	kamień 




Zaznacz kierunek ruchu

Ty 	słyszący 
Rodzina 	niedźwiedź 

## KARTA ĆWICZEŃ NR 3

1) Napisz swoje imię w notacji SW

2) Odczytaj słowa zapisane w SW

 .....	 .....	 .....
--	--	--

3) Odczytaj liczby zapisane w SW



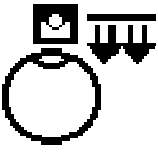


			
.....	.....	.....	.....

4) Zapisz liczby w notacji SW

3	6	1	10
.....	.....	.....	.....

# KARTA ĆWICZEŃ NR 5

Odczytaj znaki zapisane w SW

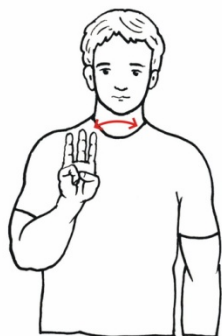
	
	
	
	
	

# KARTA ĆWICZEŃ NR 6

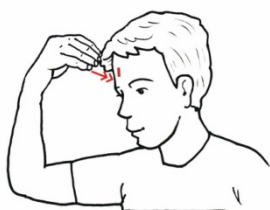
Zapisz w SW przedstawione znaki PJM



.....



.....



.....